



2025 IMPACT REPORT

Behind each number below, there's a real pet, person, or family who felt your support in 2025. You kept families together, made frontline rescue work possible, and saved pets in crisis. We are grateful for what you make possible. Let us know if you'd like to learn more!

283,803

SERVICES TO PETS

SPCA Wake provided a total of 283,803 services and items to pets in 2025.



4,015

LIVES SAVED

3,973 PET ADOPTIONS

35 returned to owner or TNVR'd

7 transferred to partner groups

257,154

PETS MEALS PROVIDED

Pets and people in need receive pet food and supplies through partnerships with 42 agencies, including Meals on Wheels of Wake County.



6,326

PETS SPAYED & NEUTERED

- 4,258 pets altered through the low-cost Saving Lives Clinic
- 2,068 pets altered through the spay/neuter voucher program

..... ►

87,546

 FIXES

Number of pets spayed/neutered through the SPCA's Saving Lives Clinic since its opening in 2009. That's **587,444 births prevented** that likely would have needed shelter services.

1,643

PETS HELPED

at four low-cost Wellness Clinics. 844 families brought their pets to receive affordable, essential vet care, such as microchips and vaccines.



16,079

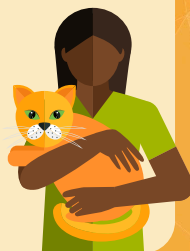
VOLUNTEER HOURS

526 volunteers contributed time equivalent to 7 full-time staff.

1,952

PETS FOSTERED

Over 400 volunteer foster families cared for young, injured or elderly pets.



2,560

PETS FROM NC SHELTERS

transferred into SPCA Wake's care. SPCA Wake partners with shelters across North Carolina to take in pets at immediate risk for euthanasia, or those who need veterinary care, rehabilitation, or simply more time to find a home.



298

COMMUNITY CATS

sterilized, vaccinated, and released or rehomed in order to reduce feral cat and kitten overpopulation.



FINANCIAL STEWARDSHIP

SPCA Wake is nationally recognized for financial stewardship and transparency to donors, earning high marks from both Guidestar and Charity Navigator. 87.1% of each dollar goes to programs and program support with 12.9% spent on fundraising. *FY24 990 Tax Return (most recent 990)

Note: This figure is higher than usual due to fundraising for the new Resource Center.

2025 IMPACT REPORT *CONTINUED*

In 2021, SPCA Wake launched the Pet Helpline – a first-of-its-kind initiative designed to make it easy for people to find free, personalized support for a wide variety of pet-related topics, while also providing insight into what programs and services our community needs most.

7,371 REQUESTS THROUGH PET HELPLINE

As housing challenges and rising costs strain pet owners, the Pet Helpline is a vital lifeline for keeping pets with the people who love them. Pet Helpline staff collaborates with all SPCA departments to provide a solution or additional resources tailored for each case.



More than 4,000 pets like Steward found help at SPCA Wake in 2025.

TOP 5 TYPES OF HELPLINE REQUESTS RECEIVED



TOP 5 REASONS FOR REHOMING REQUESTS:



THE PATHWAY TO PROGRESS

Steward arrived at SPCA Wake in September 2025 **severely emaciated and in critical condition**. Our expert veterinary team developed a carefully managed recovery plan to address his complex health needs.

Over the following months, Steward healed under close medical supervision before moving into foster care.

Today, he is at a healthy weight – more than double what he once was – stronger, brighter, and happy. In 2025, **supporters like you helped thousands of deserving pets like Steward** find the care and compassion they needed at SPCA Wake.

BUILDING THE FUTURE: A TRANSFORMATIONAL YEAR

2025 was a historic year for SPCA Wake, marked by the creation of the new Susan and Randall Ward Regional Campus for Pets & People. At the heart of this campus is the Peggy Garner Britt Resource Center, a state-of-the-art, 27,000-square-foot facility positioned alongside our existing Pet Adoption Center in Raleigh. Together, these facilities will create a true community hub – a place where pets find safety and families find the help and hope they deserve.

Looking ahead to 2026, we are excited by the expanded programs, partnerships, and lifesaving impact this new campus will make possible.